

First Metaphysical Church



November 2015 Newsletter



All Souls and Samhain Celebration

Sunday night, November 1, 2015 8:15 pm

Join us after service for a ritual honoring our ancestors and the final harvest. Circle will be followed by a food and fellowship. Please bring photos of your ancestors or sign octant others who have transitioned. We will also be leaving a Spirit Plate full of treats and traditional offerings.

Samhain, the third and final harvest, is indeed our most holy and sacred Sabbat. It is the festival of Death, and as such, it is the celebration of the Eternal Cycle, for without death there can be no rebirth. This is the time that the new cycle truly begins. It is the time when the Goddess is in Her aspect as Crone. She is Destroyer and Healer, Wise Woman, and Midwife of Transformation. Her cauldron is the great womb in which all things are conceived, grow, and are born and reborn.

Samhain is the time of introspection, it is the time to assess and re-tune ourselves to the beliefs in the oneness of all spirits, and in our firm resolution that physical death is not the final act of existence. The veil between the worlds is at its thinnest as is the consciousness which separates the land of the living from the land of the dead. We remember and honor our loved ones and ancestors; we release the spirits of those we have lost. We mourn and rejoice simultaneously.

This is the old Celtic New Year, and as such many Wiccans and Pagans recognize this as their own turning of the year. Celebrants of Samhain used this time to remember our ancestors, especially those who have passed away in the last year, and not just our biological ancestors, but our spiritual ones as well. As a festival of the dead, it was believed the dead could return to

the land of the living for this one night to celebrate with their family, tribe, or clan. Extra places were set at the table and food set out for those who chose to return (called a 'dumb supper').

Celebrants also recognized that this night divination was most powerful. At no other time in the year is Divination so powerful or accurate. Thus, our ancestors took this opportunity to foresee their futures by scrying, runes, or tarot. Some other forms of divination were the use of the apple: slice the apple through the equator (to reveal the five-pointed star inside) and then eat it by candlelight before a mirror. Your future spouse will appear over your shoulder.

Jack-o-lanterns are of either Scottish or Irish in origin. A carved gourd was used as a lantern to mark roads and houses, the scary face would frighten away the evil spirits that freely roamed the earth at this time of the year.

Some things you can do for Samhain: If you have unresolved issues with people who have passed over, communicate with them and finish what needs finishing. Prepare a dumb supper for loved ones who've passed on, and remember the joyful times you shared with them. Perform important divination at this time, then drink a toast to the Crone and the Lord of Death.



Come for a fun night of entertainment.

Handmade and home based businesses, along with psychic readers, healers, massages, and other unique gifts for you or to give. Bring a friend and come and enjoy a great night of shopping, fun and entertainment. Demonstrations include Tea Leaf Readings, table tipping, and glass walking.

Saturday, November 21st 5-9pm

\$5.00 Door donation

Coffee, tea and cookies for refreshments.

WE INTERRUPT THIS RELATIONSHIP TO BRING YOU...



hunting season

FMC Holiday Party

Sunday, December 20st

4:00-6pm

Pot luck, games, crafts for all ages



Our new FMC t-shirts are available for pre-order now!

Prices are as follows:

- Youth sizes thru adult x large \$10 each.
- 2x large is \$12 and 3x large is \$13.50. Entire amount due to Kristen Nix (board secretary)



Calling all Crocheters and Knitters

Looking for crocheter and knitters interested in making newborn or preemie hats for the American Heart Association!! If you are interested in helping me make these hats, contact me Rev Rhonda Sebert, (810) 656-1030 or yackydoodleduck@gmail.com

All hats must be done by middle of December! Please contact me because there requirements for these hats.

Come'on....LET'S HAVE FUN!



*****ONGOING AT HARMONY HALL*****

Meditation with the Reverends! Every Thursday a different Reverend of First Metaphysical Church hosts our meditation. Every night is a different theme and a new and different way to meditate. Join us every **Thursday** of the month at 7pm to 8:30pm. Love donations.

Pot Luck AND Drumming Circle Sunday, **November 29th**. Gather with us before **Sunday** service to drum and enjoy our singing bowls. Pot luck at 4pm, followed by circle at 5pm.

Midnight Meditation. Hosted by Ann Nedela Love donation. Saturdays, please arrive 10:00 pm sharp. This is an intense healing for personal mind, body and soul. It will be spent in the dark incorporating the energies of the moon.

November 14th New Moon, November 28 Full Moon

December 12th, New Moon

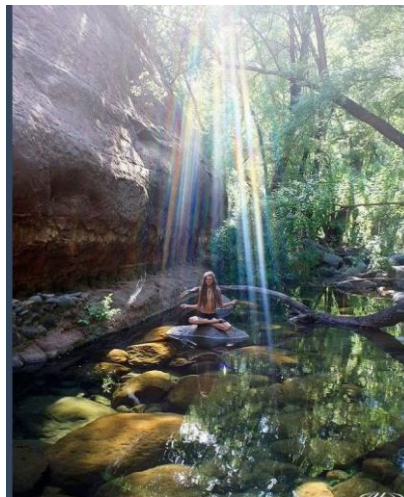
December 26th, Full Moon

The Artist's Way: A Spiritual Path To Higher Creativity

Starting as a collection of tips and hints from different artists and authors, The Artist's Way was collected into a single book and self published by Julia Cameron for maximizing the creativity and productivity of artists.

God is an artist. So are we. And we can cooperate with each other. Our creative dreams and longings do come from a divine source, not from the human ego.

- *Week Seven: Recover a Sense of Connection*
- *Week Eight: Recover a Sense of Strength*
- *Week Nine: Recover a Sense of Compassion*
- *Week Ten: Recover a Sense of Self-Protection*
- *Week Eleven: Recover a Sense of Autonomy*
- *Week Twelve: Recover a Sense of Faith*



FMC HOLISTIC PSYCHIC FAIR



Saturday, November 14, 2015 11:00am-6:00pm

Sit face to face with one of our amazing psychics and light workers offering such wonderful services such as: Tarot - Runes - Native Am. Medicine Cards- Clairvoyance - Animal Cards -Astrology - Angel Cards Intuitive Healing - Reflexology - Massage- Shamanic Healing. Admission is \$3.00 - readings start at \$10.00. We have an exciting array of interesting vendors offering unique items that you will not be able to find anywhere else.

Healing Service 6:00pm Regular service 6:30pm



NOVEMBER

Sunday	Monday	Tuesday	Wednesday	Thursday	Friday	Saturday
<p>1 Time change...turn back your clocks!</p>  <p>Samain Celebration 8:15pm</p>	2	3	4	<p>5</p> <p>Meditation 7:00</p>	6	7
8	<p>9</p> <p>Artist Way 7-9pm</p>	10	11	<p>12</p> <p>Meditation 7:00</p>	<p>13</p> <p>Fair Set Up 6:00pm</p>	<p>14</p> <p>Psychic Fair 11:00 – 6:00 \$3 admission</p> <p>Midnight Meditation 10pm New moon</p>
15	<p>16</p> <p>Artist Way 7-9pm</p>	17	18	<p>19</p> <p>Meditation 7:00</p>	20	<p>21</p> <p>Deer Widows Night Out 5-9</p> 
22	<p>23</p> <p>Artist Way 7-9pm</p>	24	25	<p>26</p> <p>Thanksgiving NO CHURCH ACTIVITY</p>	27	<p>28</p> <p>Midnight Meditation 10pm Full moon</p>
<p>29</p> <p>Pot luck and drumming circle 4pm and 5pm</p>	<p>30</p> <p>Artist Way 7-9pm</p>	31				

Webpage: www.firstmetaphysicalchurch.org



FMC Wholesale Distributer

FMC offers the following:

- 1. Any member or friend/family can pre-order from the Young Living Catalog (Wholesale prices...40% off retail prices) plus Michigan tax 6% plus \$1.00 S+H. Orders go in at the first week of each month. See our face book page under "files" for catalog and prices or look through our catalog on Sunday nights.**
- 2. Novembers Oil of the Month: Lavender Oil. Available in 5 ml bottles, 1 part Lavender oil to 4 parts carrier oil (grape seed oil) for \$5 each.**

Applying Young Living Essential Oils

Internally: All single oils maybe used as dietary supplements by dropping into empty capsules to swallow, or dripping in the throat or under the tongue.

Aromatically: All of the oils -including blends- may be diffused.

Inhaling: It takes 22 seconds for an oil to reach the brain!

Topically: All of the oils can be applied to the Vita Flex points on the feet, added to bath water mixed with Epsom salts, applied topically on location or used with body and foot massage. When applied topically, it takes 2-3 minutes for the oil to reach the blood stream, 20 minutes to affect every cell in the body, and 2 ½ hours to fully metabolize.

See the display catalogs in the hall or ask for **Rev Sherry Pickett 810-964-7535, Rachel Moreno 810-964-7007 or Ann Nedela 810-412-5443**

ORDERS FROM CATALOG made first of month...Next order in September

**We still have the following oil mixtures available for \$5.00 each:
Peppermint Twist, Lavender Dream, Lemon Aid, Clove Clarity, Radiant Rosemary, Cinnamon Carat, Thieves Blend**

Do something. If it works, do more of it. If it doesn't, do something else.
-- Franklin D. Roosevelt

"Here is a test to find out whether your mission in life is complete.

If you're alive, it isn't."

~~Richard Bach

KROGER FREE MONEY

We received a check from our Kroger Community Awards for 2nd quarter May-July of \$27.94 with only 4 families being signed up. This is a community program Kroger offers and it doesn't affect your discounts in any way. If you are a Kroger shopper, go online and sign up to have your card link to the church and you will also be helping us to receive more free money!

It is easy to create a Kroger account and find the church name and link them up. Just set up your email address and your card number or phone number. In account summary at the bottom go to community awards, Enroll, Find your organization search, click the button and Save. You only have to link the church once through the year and every time you scan your card you are helping us too!!

You can also go on and put digital coupons on your card and get a Free Friday item every week by loading it on your card. Like them on Face book or upload the app to be able to do them weekly.

WE NOW OFFER YOU THE ABILITY TO USE YOUR CREDIT CARD

We now have The Square to take credit and dept cards!!! We have the Square set up and running for our church for donations and purchases. If you want to give a donation but don't carry cash we can now receive it by running your card the night of classes or services or Love donations. We will use this for all our monthly psychic fairs and to purchase anything like shirts, books, oils or any other merchandise the church sells. The monies go directly into the church's account and is very secure. We are happy to be able to offer this new service to you.

Board Elections are coming in January 2016.



First Metaphysical Church Members November Birthday

Gina Matchett 1
Rev Jeannie Genaw 5
Duanne Judd 6
Rev Linda Kinard 14
DeTria Taylor 17
Jerry Skinner 26
James Sisco 27
Rev Jay Powell 18
David Popovits 28

Ren Loomis 30
Nicolette Lennox 9
Cindy Hill 28
Scott Hankins 30
Mary Frazier 13
Gaylord Brooks 5
Samantha Murphy 12
Youth: Taylor Payne 9

FMC BOARD OF TRUSTEES 2015

Head Minister Rev Connie Lundy 248-627-2841

Connie Lundy on Facebook

President Rev Nicky Highlen 248-240-1864
superwoman422001@yahoo.com

Vice President

Rachel Moreno

Facebook or 810-964-7007

Treasurer Jeniel Payne 810-742-4995
Jlp742@aol.com

Secretary Kristen Nix 810-399-5059
kristen.nix@gmail.com

Trustees Kristin Senters 810-965-5692

kristinsenters@aol.com

John Lundy 248-627-2841

Connie Lundy on Facebook

Jim Haywood

Jimwood6363@gmail.com

Gaylord Brooks

Gjbrooks59@gmail.com

Barb Nada 727-735-3569

bnada3@yahoo.com

Tonya Barton

810-874-2173

Minutes from the Board of Directors meetings are available to all members of the Congregation anytime.

Call Rev Nicky Highlen 248-240-1864 or Kristen Nix 810-874-5901

We are an Inter-faith organization, and we honor the truth in all religions. We accept people of all faiths and invite everyone to join us in our spiritual journeys. It doesn't matter by what name you call your God or Goddess; it's what's in your heart that counts. Your own individual path to spiritual growth is always accepted in this church without judgment as long as you harm no one.

We believe in the Divinity of each person and the sacredness of nature.

FIRST METAPHYSICAL CHURCH
8267 E ATHERTON ROAD
DAVISON, MI 48423

Harmony Hall rental: Seats 100 people
Please call for information: 810-653-3291

Living is Learning to Love

How to find us...

FIRST METAPHYSICAL CHURCH
8267 E ATHERTON ROAD
DAVISON, MI 48423
810-653-3291

Webpage: www.firstmetaphysicalchurch.org
<http://spirituality.meetup.com/432/>
Face book: First Metaphysical Church Group



